

EMBA

Business School

ISUGA - FRANCE



EMBA Business School, your gateway to Europe.

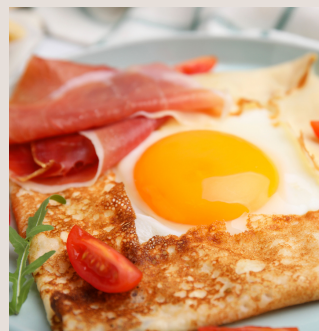
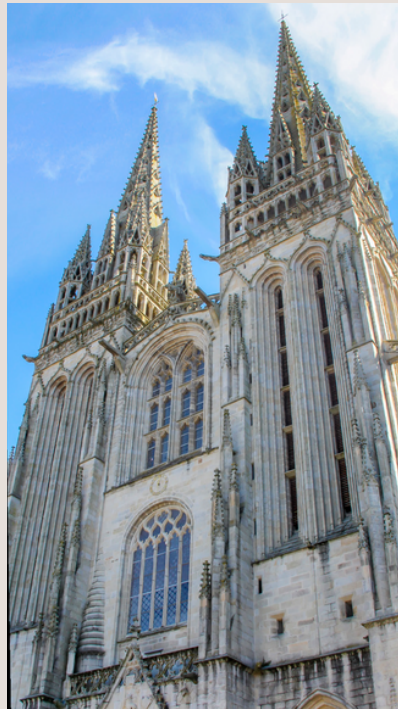
COME AND JOIN US FOR A MULTICULTURAL EXPERIENCE IN A CAMPUS THAT BRINGS CLOSER EUROPE AND ASIA !

Our campus is located in South-Finistère (Brittany, France) in the lovely town of Quimper, a city awarded City of Art and History by the French Ministry of Culture, and recognized in the region for its dynamic economy. It is also a region known for its traditions and its strong and lively cultural identity, that attracts tourists from all over the world.

EMBA Business School offers you the possibility to discover, understand, and learn more about Brittany, France, Europe and to live an academic and cultural experience where the keywords are curiosity, passion and success.

We live in a world where people from all countries meet, interact and work together. Intercultural skills added to professional skills give the students all the tools to build their career and become actors of tomorrow's world.

The international environment of the EMBA Business school, its cross-cultural approach of Asia and Europe as well as the assets of the city of Quimper make the campus an enjoyable place to study and live.



FACTS AND FIGURES

| | |
|-------------|-----------------------|
| 1990 | School foundation |
| 530 | Students |
| 1300 | Alumni |
| +50 | Academic partners |
| 15 | Permanent staff |
| 90 | Teachers and trainers |
| 95% | Success rate |



MESSAGE



Created in 1990, EMBA Business School is a school affiliated to the Chamber of Commerce and Industry of Finistère. Its ambition is to train business developers to be highly competitive and conversant with the Asian and European markets.

Throughout the years Asia and Europe have built strong diplomatic and business relations, they have developed partnerships involving public and private companies;

EMBA Business School, through its ISUGA Program, give students

the professional skills that will be necessary to support and develop these business relations.

In a world facing deep economic changes, the strength of our school is also to highlight the linguistic, cultural and intercultural skills that will make students cultivate their curiosity, understand partners from other cultures, and enable them to put projects together.

We are looking for students who are eager to take an active part in designing tomorrow's world. We propose international students 3 different academic paths:

ISUGA program, Europe program and a **Short program**.

Looking forward to welcoming you on campus for an exciting and inspiring academic and cultural experience !

Delphine N'DION - Head of the ISUGA department

ISUGA PROGRAM

The ISUGA program provides students with the technical, cultural and linguistic skills to become an expert in business development between Europe and Asia.


| | September > February/March | February > June/July | |
|---|--|---|---|
| Year 1 6 000€  | Business fundamentals, International trade & Asian cultures, 1 foreign language | University stay or Europe program | BBA Europe - Asia International Business |
| Year 2 6 000€  | Business fundamentals, International trade, Asian cultures & economics, 1 foreign language | University stay or humanitarian mission or a 2-month internship | |
| Year 3 8 500€  | International trade and expertise Europe/Asia, 1 foreign language | 3-month internship | MBA Europe - Asia International Business |
| Year 4 8 500€  | International business expertise Europe/Asia + 1 major* 1 foreign language | University stay or Europe program | |
| Year 5 9 600€  | Expertise in international business development + 1 major* 1 foreign language | 4-month end-of-studies internship | |

Major* = Luxury goods sector/ Entrepreneurship/ Digital marketing/ Global sourcing

Master "Manager of International Business Development " specialized in Europe and in Asia
Degree recognized by the French government.


EUROPE PROGRAM

The program offers an introduction to **French and European cultures** as well as language courses.

| | | |
|--|---|--|
| 4 months (13 weeks per term)  | September to December and/or January to April | French, Culture & civilisation (Brittany, France & Europe), English, Cultural & company visits, Press review |
|--|---|--|

SHORT PROGRAM

Intensive immersion in Brittany including courses and cultural & company visits.

| | | |
|---|---|---|
| 1 to 4 weeks  | Flexible program in March from 1 to 4 weeks | French, Culture & civilisation (Brittany, France & Europe) Cultural & company visits |
|---|---|---|

 courses in French  courses in English

STUDENT SUPPORT

The EMBA Business School staff offers a customized support to international students upon their arrival in Quimper.

Before arrival

- Regular contacts with the school administrative team for
 - housing choice and booking (studio, shared apartment, home stay, or Appart Hotel)
 - administrative information
- Access to the Digital Welcome Guide

Arriving in Quimper

- Pick-up at the Quimper station
- Buddy program
- Assistance by the school administrative team for
 - bank
 - home insurance
 - check-in/check-out in apartment
 - health insurance



During the term/year

Constant support by the EMBA team for administrative and academic issues

TESTIMONIES



Le XIONG - Chinese student

I come from Shenzhen University and one of my main motivations was to be able to read one of Albert Camus' books in French after several years of learning the language. I'm really enjoying my time in France, because I have more time to concentrate on my personal goals and I have a different perspective on life.

Jeonghyun LEE - Korean student

I come from Daejin University in Seoul. I chose to study in France because I would like to work in the fashion industry as a stylist and France is THE country for fashion. The teachers gave me a better understanding of French culture and my French friends were very helpful from the moment I arrived on campus. You have to get out of your comfort zone and not hesitate to start the conversation first.



Saki - Japanese student

Quimper is such a lovely town ! It is so different from home !
With the courses and the various activities shared with the French students, my French rapidly improved. I found French people to be sociable and very welcoming. I am now going back to my country filled with warm memories. My stay in France has gone so fast ! No doubt, I'll be back !



CONTACT US

EMBA Business School

1 avenue de la plage des gueux

29000 Quimper - FRANCE

+33 (0)2 98 10 16 16

www.emba-bs.com/en



EMBA
Business School

Une école supérieure

